



# InWaTec - Wegauge Joint Venture





# A PERFECT SOLUTION FOR PIPELINE INTEGRITY

## About Wegauged

Since its inception in 2015, Wegauged has become a leading company in the oil and gas industry that offers pipeline inspection and services. Wegauged stands out as the only Indian company that breaks new ground in the manufacturing, research and development of inline inspection. Wegauged strives to be at the cutting edge of innovation. We use the most advanced sensors, robotics, and data analytics to ensure proactive maintenance and for reducing downtime. This allows our clients to operate with optimal efficiency and safety.

# InWaTec - Wegauge Joint Venture



Wegauge Inspection Services Pvt. Ltd provides in-line inspection services to the Oil and Gas pipeline operators enabling them to monitor their pipelines and develop adequate maintenance and repair programs.

Our inspection tools vary from 6" to 48" in diameter and equipped with advanced sensor technology, fast data acquisition capabilities and automated AI based data processing software. This ensures the most accurate information on pipeline condition.

We specialize in manufacturing and operating high-resolution pipeline inline inspection tools which include:

- High-Resolution Axial MFL Tool
- High-Resolution Circumferential MFL (TFI) Tool
- High-Resolution Multi-Channel Deformation (Caliper) Tool
- Combination Tools with inertial Measurement Unit (IMU)

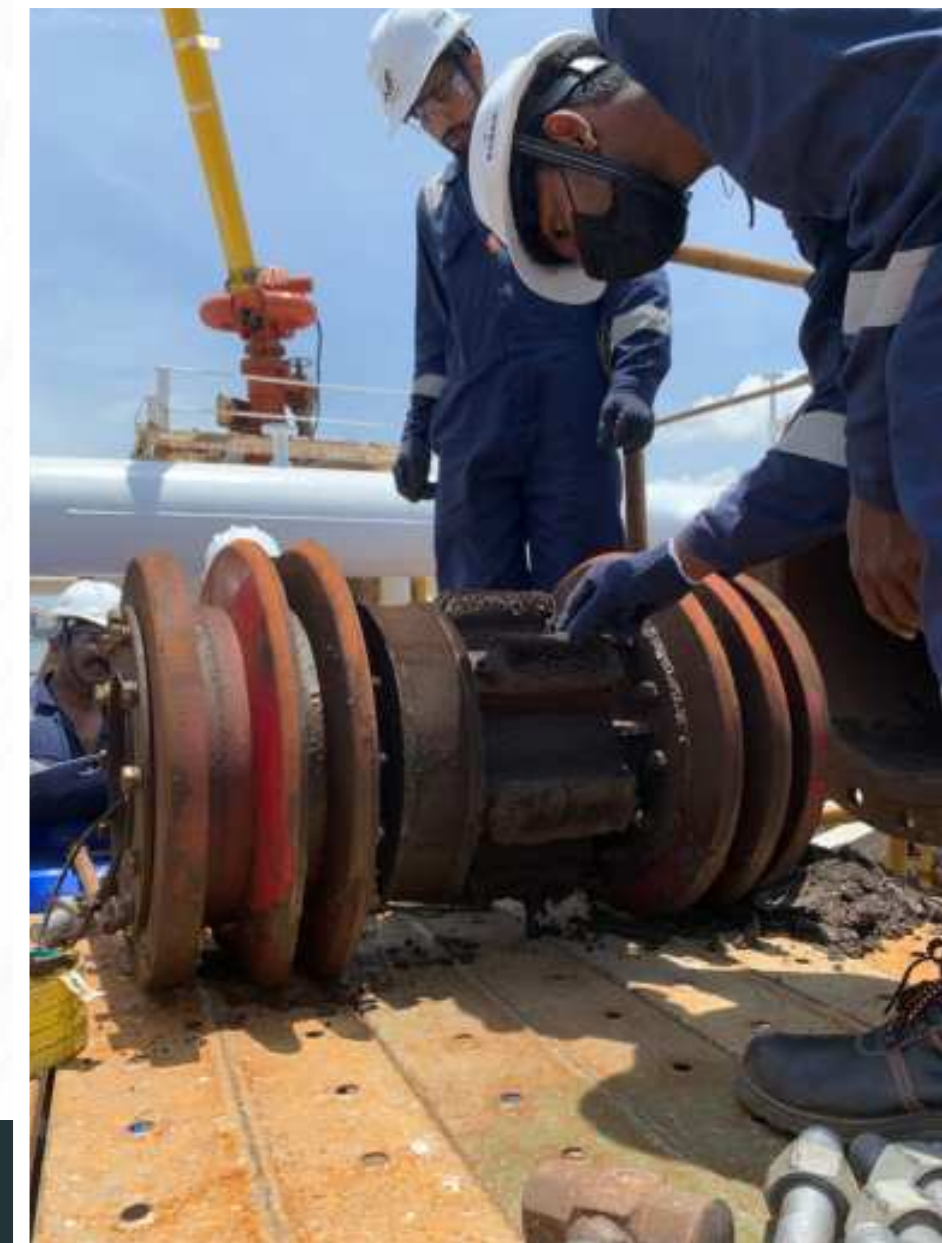




# InWaTec - Wegauge

Through our Joint Venture with WEGAUGE Inspection Services Pvt. Ltd we can offer the following services and products:

- In-line inspection with generation of inspection reports
- Monitoring of pipeline technical condition based on periodic surveys and database maintenance.
- Post - ILI Support and Review
- Defect verification
- DGPS Survey
- Pipeline Pigging & Cleaning
- Pig Tracking systems
- Supply of cleaning pigs
- Supply of traps (launchers & receivers)
- Pigging the Non-Piggable
- Pipeline repair and maintenance





# WHY WEGAUGE?

**Advanced Sensor Technology:** We employ Triaxial Hall Sensors for superior defect sizing, with each flap containing 16 Hall Sensors and 2 Coil Sensors, spaced just 1mm apart, enabling high-resolution inspections.

**Enhanced Software with AI:** Leveraging AI, our software improvements enhance defect sizing accuracy, automate processes, and streamline inspections, delivering more reliable and efficient results.

**High Sampling Rate:** With a sampling rate of 1 ms, we provide higher resolution data, allowing for more accurate and detailed assessments.

**Ample Storage Capacity:** Our tool supports up to 2 TB of storage, ensuring comprehensive data collection and analysis capabilities.

**Longevity and Durability:** Our innovative PU (cups and discs) design minimizes wear and tear, extending the tool's operational lifespan for extended periods of use.

**Expertise and Experience:** With over 15 years of hands-on industry experience, our engineering team excels in designing innovative tools and applications tailored to pipeline needs.



MAGNETIC INSPECTION TOOL

# MAGNETIC FLUX LEAKAGE

STANDARD PERFORMANCE CHARACTERISTICS

The tool is designed for pipeline monitoring by determination of the magnetic flux leakage in a pipeline with longitudinal magnetization in pipeline material and girth welds while the inspection tool is moving in the transferred product flow.

Target defects:

- ▶ Corrosion
- ▶ External Flaws
- ▶ Increase/decrease in metal
- ▶ Internal Flaws
- ▶ GWA



**6" - 48"**  
tool diameters



Liquid, gas  
pipeline products



**-15°C - +100°C**  
temperature range



Up to 4.0 m/s  
operating speed range



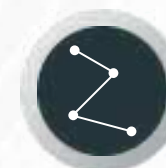
4 - 29 mm  
pipe wall thickness range



1.5D  
minimum bend radius



100 bar  
maximum operating pressure



350 km  
maximum inspected section length





MAGNETIC INSPECTION TOOL

# TRANSVERSE FIELD INSPECTION

STANDARD PERFORMANCE CHARACTERISTICS

The tool is designed for pipeline control using the magnetic flux leakage determination technique with transverse magnetization in pipeline material and longitudinal welds while the inspection tool is moving along the transferred product flow.

Target defects:

- ▶ Corrosion
- ▶ Slotting
- ▶ Crack-like defects in longitudinal welds and the pipe body.



**6" - 48"**  
tool diameters



Liquid, gas  
pipeline products



**-15°C - +100°C**  
temperature range



Up to 4.0 m/s  
operating speed range



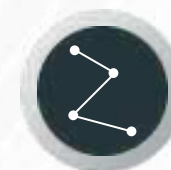
6 - 18 mm  
pipe wall thickness range



1.5D  
minimum bend radius



100 bar  
maximum operating pressure



300 km  
maximum inspected section length

# DATA ANALYSIS AND RESEARCH CENTRE

Information processing and analysis is the most important step in pipeline inspection which includes the following processes:

1. Decompression (translation) of data copied from the on-board storage of the in-line inspection tool into a format suitable for processing by specialized graphics interpretation software.
2. Data interpretation using special software which comprises the identification and measurement of defects, pipe sections and other pipeline features, as well as spreadsheet generation.
3. Preparation of spreadsheets containing inspection results for each run of the in-line inspection tool for their inclusion into the «Defect» database.

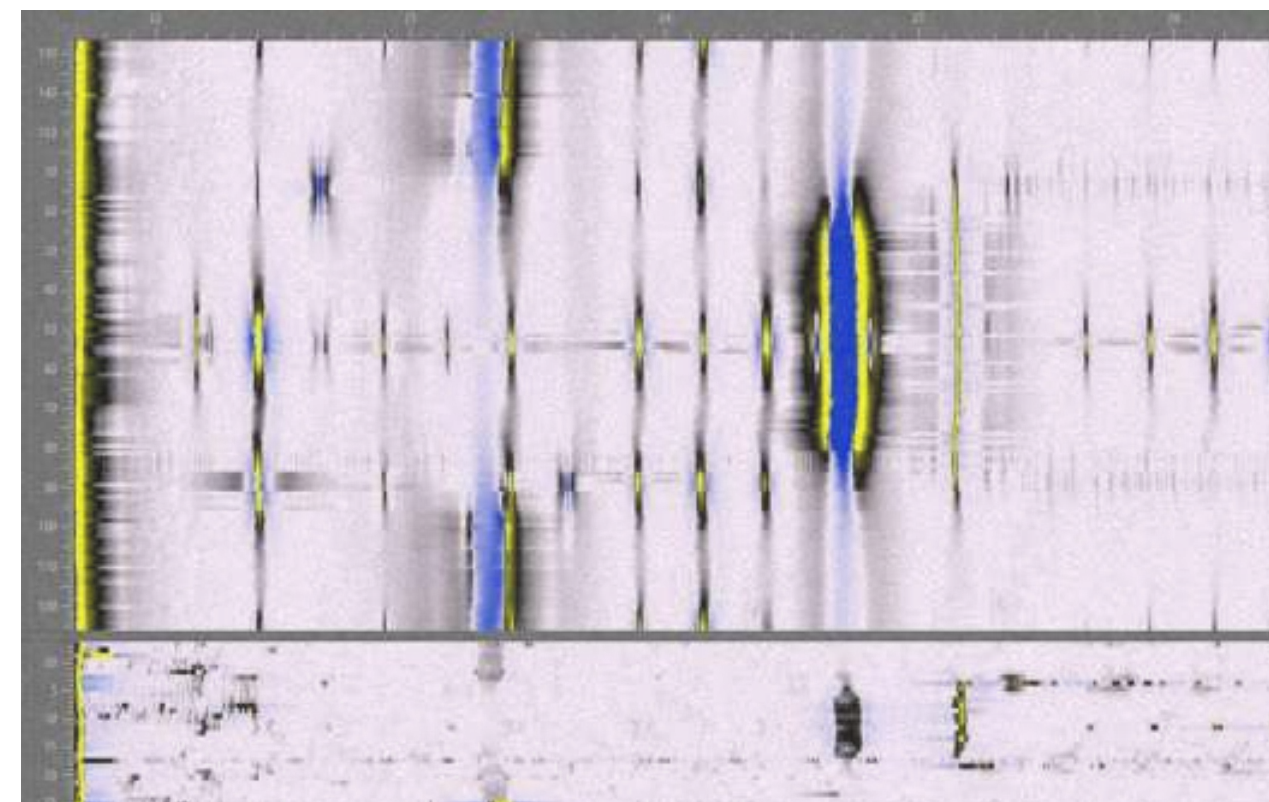




# DATA EVALUATION

Wegauged has developed and implemented an information and analytical complex for the analysis of obtained inspection information with the “**Defect**” database as the core.

- AI-driven and manual data analysis software for consolidated analytical reports on pipeline inspection and repair.
- Optimized assignment of defect repair techniques, parameters, and schedules.
- AI-driven strength and durability calculations for defective pipelines.
- Generation of consolidated analytical reports on pipeline inspection and repair





**THANK YOU**



# Contact us for More

## Questions? Comments? Concerns?

Contact us to discuss anything you'd like, or simply drop a line to say hi. We love (virtual) coffees and always welcome the opportunity.

InWaTec Combined The Netherlands  
Phileas Foggstraat 120  
7825 AM Emmen  
The Netherlands  
+39 392 0360775  
[rschmits@inwatec-cs.com](mailto:rschmits@inwatec-cs.com)